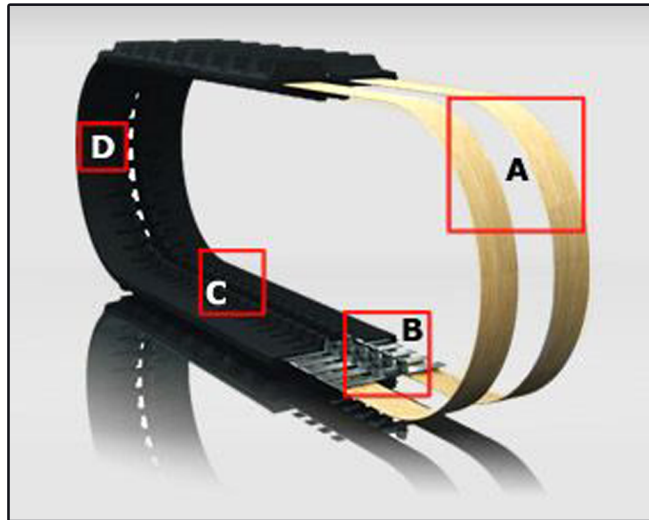




Consistent Quality Rubber Track Manufacturing Design



- A:** Continuous Steel Cords are wrapped tightly within to optimize our rubber tracks' strength, enhancing your rubber tracks' service life.
- B:** Solid Steel Links run the width of our rubber tracks to help displace your machine load evenly across the ground and to increase the overall strength of your rubber track.
- C:** Steel Guide Wings integrated within your steel links permits your sprocket and rollers to travel easily along the track without any worries of "jumping track" and roller or sprocket damage.
- D:** Virgin Rubber (non-recycled) all-natural rubber guarantees the longest service life out of your new rubber tracks. With dozens of track patterns available, you can rest assured you're equipped with the right rubber track to operate your machine regardless of the application.

POPULAR PTS Tread Designs



Z-LUG



C-LUG



B-LUG



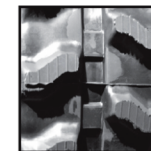
ASV



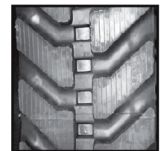
BS VORTECH



BS MULTI BAR LUG



180x72



300x52.5N



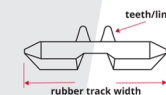
POMP'S TRACK SYSTEM

The Pomp's PTS Track System is designed for maximum value using high quality materials. Our low-vibration design increases productivity. Track patterns are available for specific machine applications and working conditions. Ask one of our professional sales associates which patterns are available for your machine.

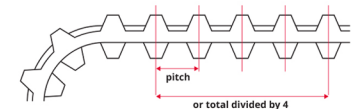


HOW TO MEASURE RUBBER TRACKS

WIDTH



PITCH



LINKS

